

# Foxton Futures Community Planning Session

20 November 2023



# Outline for Today

- Purpose
- The Output
- Where does Foxton Futures fit in?
- Context - What we know and What is happening
- The Challenges
- ***Explore and Capture Your Ideas***
- Wrap Up



# Purpose of Community Planning Sessions

## ***What are we here for today?***

To provide a forum for you to contribute your ideas and aspirations for the future Foxton and Foxton Beach community.

## ***What do we want from today's sessions?***

To capture your ideas, aspirations and feedback in a way that we can use it to inform and help shape a Foxton Futures Community Plan.

# What is a Community Plan

A Community Plan is the voice of that community and will highlight their goals and aspirations. It will outline what the community wants to preserve in their area and outline ways to enhance and develop other areas of importance.

# Community Plan

Wanting to create a Plan for the future of Foxton and Foxton Beach that:

- **Reflects** the community's ideas and aspirations
- **Responds** to some of the pressing challenges and opportunities
- Creates a clear **integrated picture** of the future and what we want to work towards
- Brings **alignment** and is something that the community and stakeholders can buy into and support
- Is capable of **evolving** as context changes



# Foxton Beach/Te Wharangi Community Plan



## Relevant Resources



## Te Awahou Foxton Climate Resilience Project

Foxton township has historically been affected by flooding on a regular basis. Horizons Regional Council and Horowhenua District Council have been responding jointly to this issue, with funding set aside in both councils' current Long-term Plans.

Flooding is caused by two key issues, these are:

1. Runoff from farmland to the east overwhelming the Foxton East Drainage Scheme network and flowing out through Foxton township. The Kings Canal drain overtops in relatively small storm events most recently in 2007, 2008, 2010, 2015 and 2017; and
2. An undersized stormwater reticulation network within Foxton township causing localised surface flooding during storm events.

This project concentrates on the first issue, diverting runoff away from Foxton township and storing it on low-lying rural land south of the township until it can gravitate or be pumped out into the Foxton Loop. Dealing with the currently

undersized Foxton East Drainage Scheme will prevent overflows from getting into the local stormwater network, leaving more capacity available for draining localised surface flooding.

Factors contributing to issues with the Foxton East Drainage Scheme network include:

- Run off from the large catchment to the east of Foxton;
- Kings Canal and Purcell Street Drain are undersized and overtop regularly;
- Seepage through the existing Kings Canal embankment;
- An undersized culvert running under State Highway 1 at Purcell Street;
- When water levels are high at the outlet of the Foxton East Drainage Scheme network the floodgate into the Foxton Loop closes and prevents water draining; and
- No significant water storage areas are available in the network.

**Foxton Futures  
Implementation**

REPORT  
March 2020



# Foxton Futures

**Manawatū River Loop Rejuvenation**



# Background Context



An aerial photograph of a town, likely Foxton, showing residential houses, commercial buildings, and a church. A semi-transparent grey box is overlaid on the left side of the image, containing white text. The text provides population statistics for Foxton and Foxton Beach, and states that they together make up 15% of the district's population according to Infometrics 2022.

# 5,540 Population

Foxton 3,360 (+213)

Foxton Beach 2,180 (+296)

15% of the District's Population

(Infometrics 2022)

An aerial photograph of a town, showing a mix of residential houses, commercial buildings, and parking lots. A semi-transparent grey box is overlaid on the left side of the image, containing white text. The text reads "Population to pass 6,000 in 2029".

**Population to pass  
6,000 in 2029**

# 375 Business Units

(Foxton 237 and Foxton Beach 138)

12.2% of the District's Business Units

9.8% (\$121m) of District's GDP

(Infometrics 2022)





**1,382 Filled Jobs**

(Foxton 1,085 and Foxton Beach 297)

11.5% of the District's Filled Jobs - (Infometrics 2022)

# 28%

of Foxtton Beach  
residents moved  
there in the  
previous 12 months

(Census 2018)



## FOXTON BEACH

NEW ZEALAND



# What we Know and What is Happening?



**CWS**  
CIVIL WORKS  
SCAFFOLDING

027 530 1359

CIVIL WORKS SCAFFOLDING

CIVIL WORKS SCAFFOLDING

CIVIL WORKS SCAFFOLDING

CIVIL WORKS SCAFFOLDING

CIVIL WORKS SCAFFOLDING

CIVIL WORKS SCAFFOLDING

CIVIL WORKS SCAFFOLDING



Featured

**Taper Eatery**

Featured

**Foxton Fish and Chippery**

**Thoroughbread**

**Ōhau Gourmet Mushrooms**

**The Little White Rabbit**

**Te Takeretanga o Kura-hau-pō**

**Piriharaeke - Generation Inspiration Centre**

**De Molen Dutch Windmill**

**Levin Performing Arts Society**

**Foxton Flax Strippers Museum**

**MAVtech - Museum of Audio and Visual Technology**



**COME FIND  
YOURSELF**  
HURAINA  
TŌ MATA

[horowhenuanz.co.nz](http://horowhenuanz.co.nz)



**HOROWHENUA**

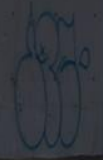
**GO Media**

09:14

50

sky  
STATION

Public Parking  
8.5 per Day





## Foxton Beach Reserves Investment Plan

2015/16 - 2025/26



# \$1 million

A decade  
of targeted  
investment  
in Foxton  
Beach's public  
reserves







Averaging **37** subdivisions  
per year over the last 3 years



Averaging **15** Resource consents per year over the last 3 years

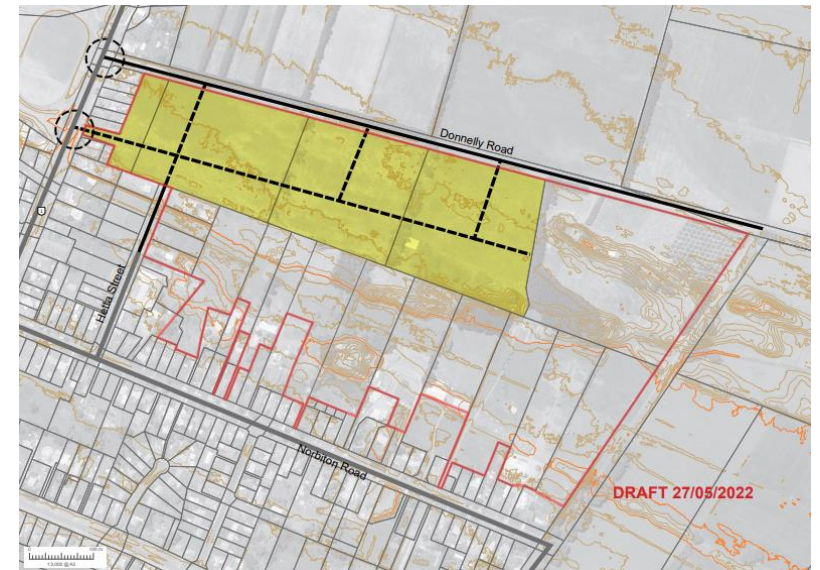
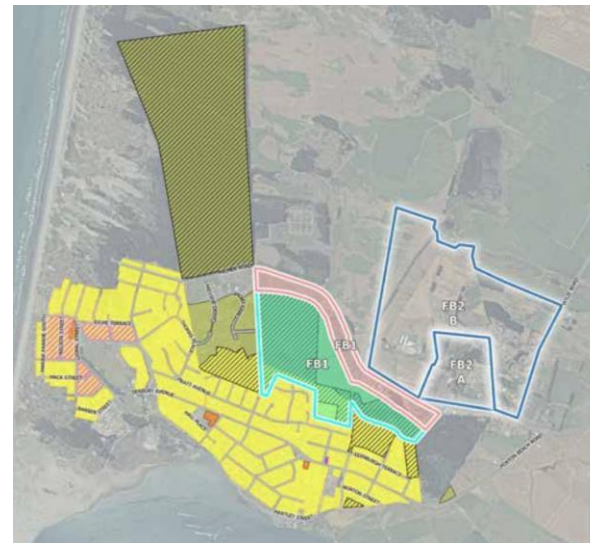
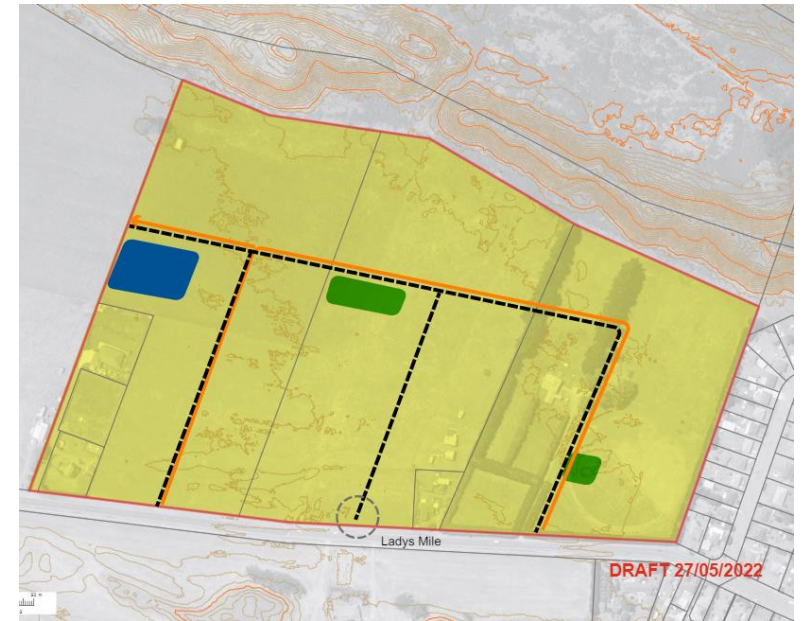
# Far North Solar Farm Ltd

- First solar farm to be built in the Horowhenua–Kāpiti region – Bergin Road, Foxton
- Will generate enough renewable energy to power 7,000 average Kiwi homes
- Construction expected to begin in January 2024 and be completed by January 2025



# Growth Planning

- Additional 1,600 houses for the Foxton and Foxton Beach areas (2020 – 2040)
- Additional growth areas identified for future development – require land to be rezoned
- Working on further changes to rules regarding housing density





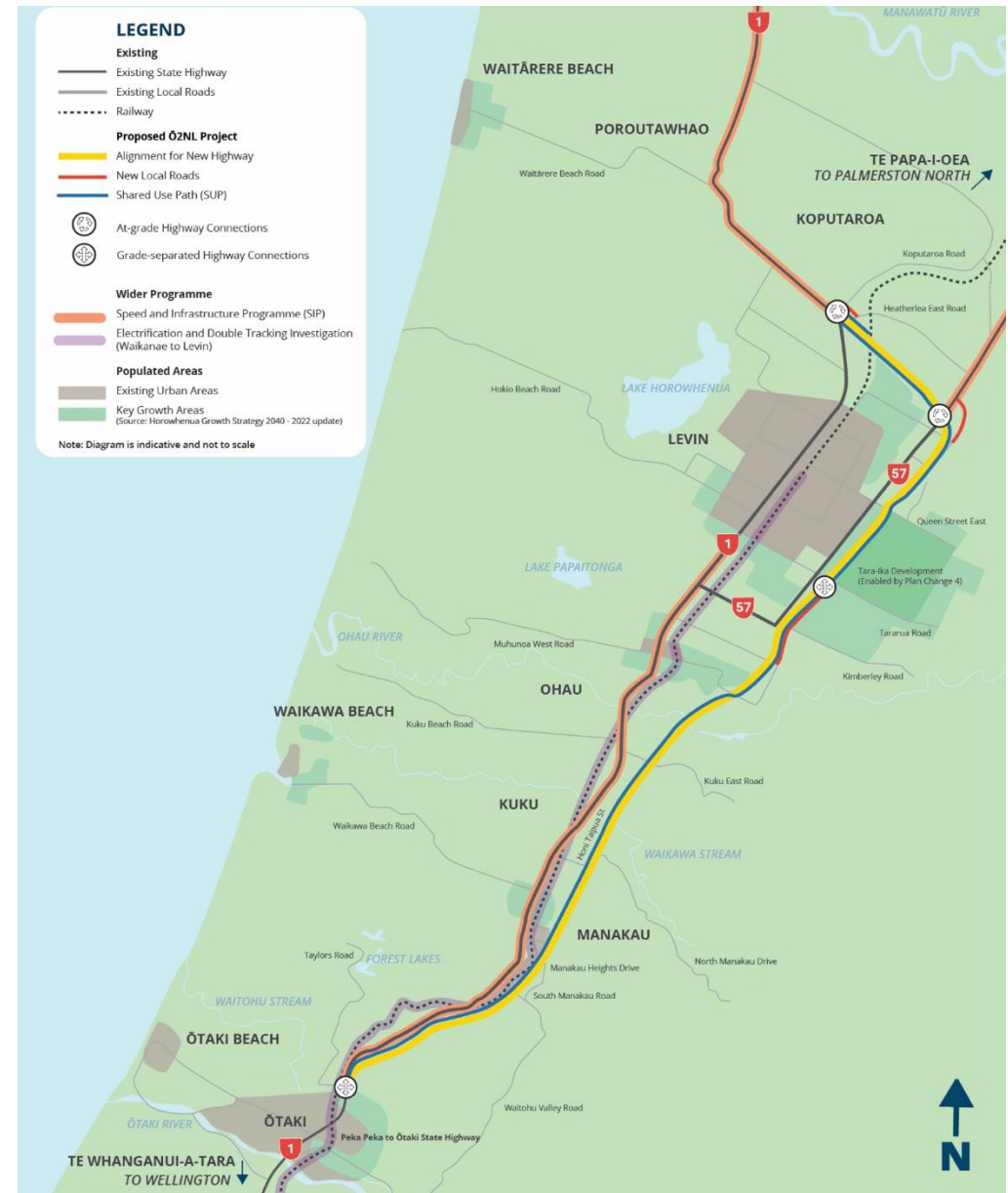
# Challenges

- Various groups and aspirations - multiple voices and direction
- Foxton and Foxton Beach two communities within one community?
- Growing district – growth pains and new expectations
- New businesses
- Changing Weather Patterns
- Lack of committed future funding
- O2NL – the closing window





O2NL



# Proposed Timeframes for O2NL

- Consenting: Nov 22 – Feb 24 (Appeals?)
- Procurement: June 22 – Dec 23
- Detailed Design: March 24 – Aug 25
- Property: Aug 21 – May 26
- Construction: Feb 25 – Dec 32
- Road Open: By Christmas 2029



PORIRUA 10  
OTAKI 2021 Goo 50

80

Newlands  
EXIT ONLY

Johnsonville  
EXIT 900M

Porirua  
Palmerston North

80

nterrial

© 2021 G







Red flag with white text, possibly a logo or brand name.

NEWS

NZ ART + GIFTS

2024 Google





# Otaki



# O2NL Challenge

- First town on State Highway 1 out of Wellington (or the last before heading to Wellington)
- How does this change Foxton?
- Does Johnston Street look different in the future?
- What gets people off the State Highway to the Main Street and River?
- Change in policy direction?



# Your Turn...

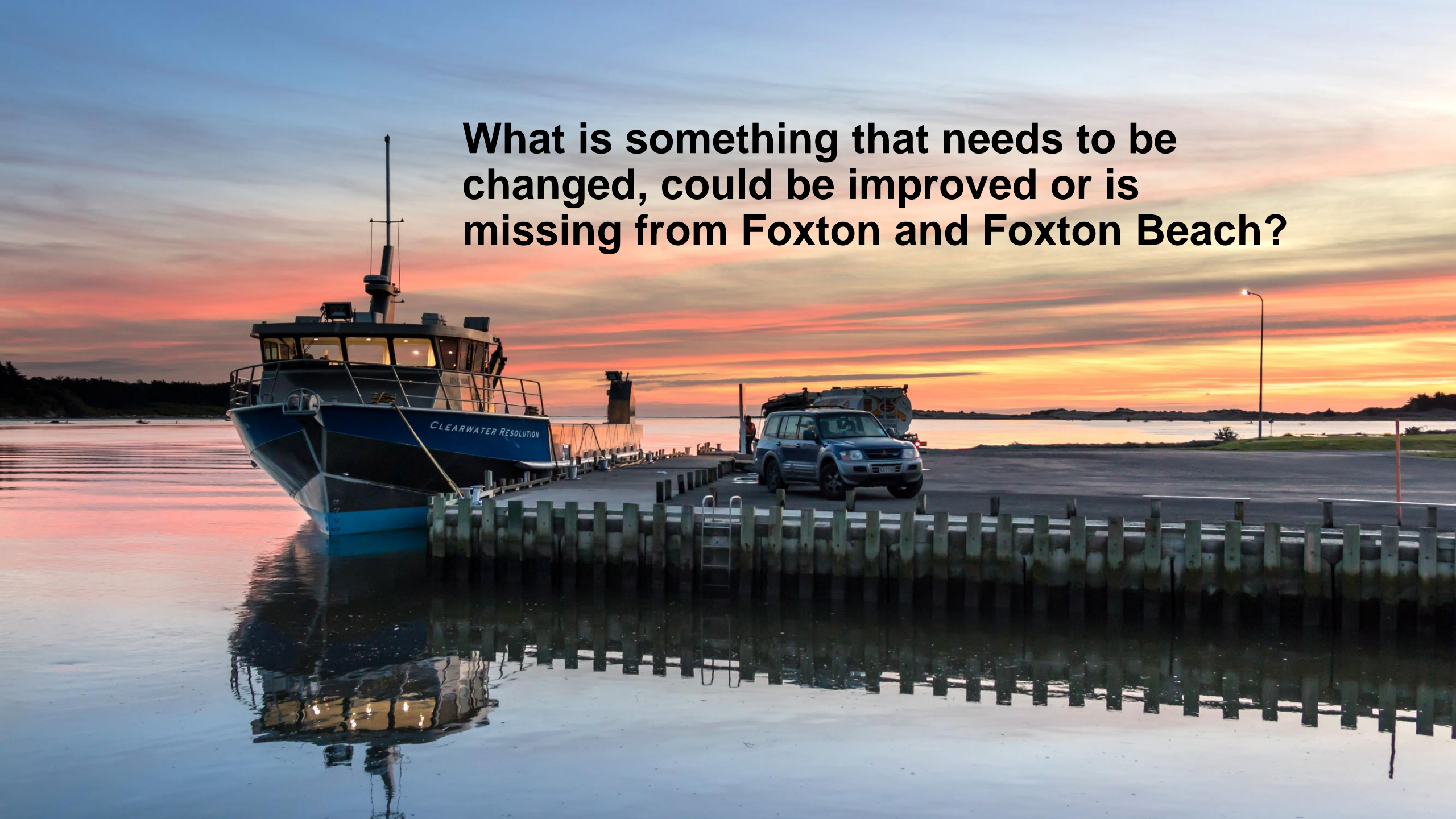
**What are the things you appreciate and value about Foxton and Foxton Beach?**





What is the thing you Love about Foxton and Foxton Beach?

**What is something that needs to be changed, could be improved or is missing from Foxton and Foxton Beach?**





**What are the opportunities for  
Foxton and Foxton Beach?**





**If Foxton and Foxton Beach, off the back of the growth and change were to go through a transformation, what would you want to stay the same?**

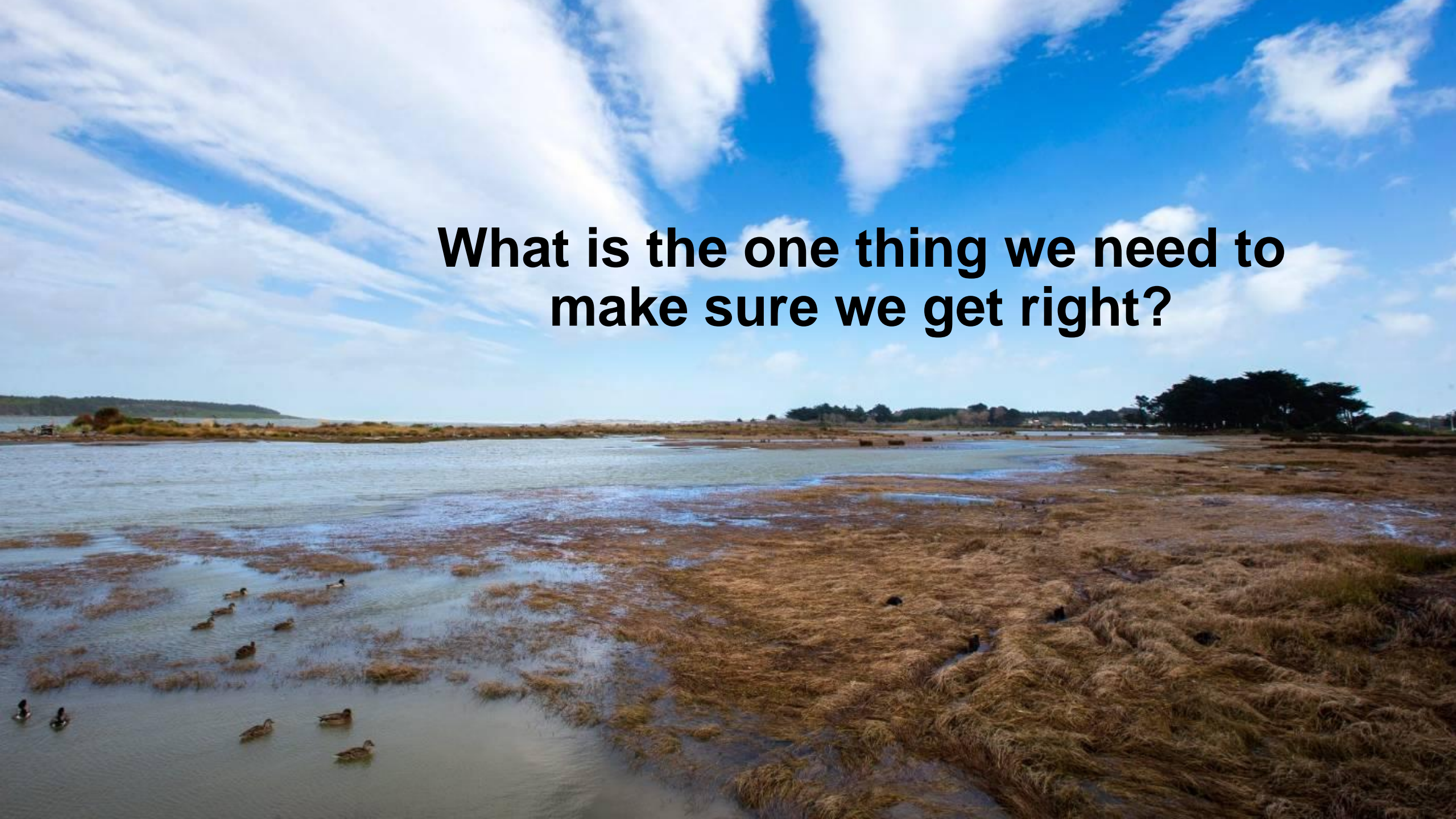


**It's 2030, you drive into Foxton and Foxton Beach, there has been a concerted effort to implement the Foxton Futures Community Plan, what are you seeing? What looks different?**



**If Council could help make one of the ideas or initiatives come to life in the next two years what one would it be? Why?**

**What is the one thing we need to  
make sure we get right?**



A person wearing a black helmet, a red life vest, and black shorts is water skiing over a white ramp in a lake. The skier is holding a tow rope and has a black and yellow water ski. The ramp is partially submerged and has logos on its side. In the background, there is a grassy hill, a yellow umbrella, and a tall black structure. The water is dark blue with white wake.

**Any other thoughts or comments?**

**HOMETOWN**  
**OFF THE LOOP**  
MERCIN ROAD, FOXTON

**OFF THE LOOP**



# Community Plan

Wanting to create a Plan for the future of Foxton and Foxton Beach that:

- **Reflects** the community's ideas and aspirations
- **Responds** to some of the pressing challenges and opportunities
- Creates a clear **integrated picture** of the future and what we want to work towards
- Brings **alignment** and is something that the community and stakeholders can buy into and support
- Is capable of **evolving** as context changes

## Ngā Take Matua - Our Priorities

The Waitārere Beach community identified the following priorities. These priorities are consistent with the vision and values the community has for Waitārere Beach.

**Te aro ki te āhua ake me te wairua whakawhanaunga o roto i te hapori o Waitārere.**

**Recognise the character and the sense of community that makes Waitārere Beach special.**



**Te takutai, ngā tāhuahua me ngā arawai.**  
**The beach, dunes and waterways.**



**Ngā rēhia tū-ā-nuku.**  
**Outdoor recreation.**



**Ngā pūnahanga e tutuki ai ngā hiahia o te hapori.**  
**Infrastructure that meets community needs.**



## New Surf Life Saving Club Building

### What

- A new building for the Levin Waitārere Beach Surf Life Saving Club is constructed.

### Who

- Levin Waitārere Surf Life Saving Club.
- Horowhenua District Council.
- Local Iwi.

### When

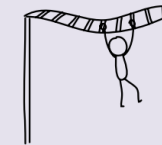
- To be confirmed.

### Success indicators

- The Levin Waitārere Surf Life Saving Club building is fit-for-purpose.

### Funding

- It is anticipated funding for this project will come from a range of sources, such as external grants and fundraising by the Levin Waitārere Surf Life Saving Club.



# Follow-Up

Had another thought or remembered something you wish you had said

Email [foxton.futures@horowhenua.govt.nz](mailto:foxton.futures@horowhenua.govt.nz).

**David McCorkindale**

Group Manager Community Vision & Delivery

E: [davidbm@horowhenua.govt.nz](mailto:davidbm@horowhenua.govt.nz)